



Access Realty Ltd.



*Residential Building
Sites Current Listings*



Phone: 250-588-8378 Email: info@accessrealtyltd.com Fax: 250-385-9998

Current Residential Building Site Listings

Back to Access Realty Homepage

Re-Development Property

Backing Onto Cecelia Ravine Park, \$645,000

Now Sold at \$640,000



50's model (exact age unknown) solid home on sizeable 9,697sq.ft. property with 73' frontage (all measurements are approximate only, as the property is a bit off the square). Property backs directly onto recently expanded Cecelia Ravine Park. Perfect site for Strata Duplex Development, or Potential for a Three or Four unit Townhome site.

Seller will consider offers subject to re-zoning.

Please call for additional information:

Dave Vogel @ 250-588-8378

dave@accessrealtyltd.com

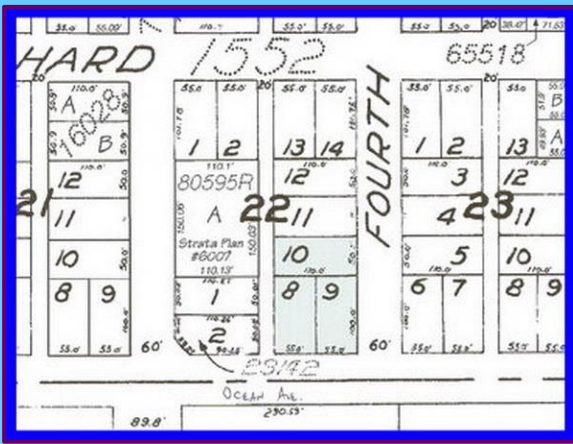


Up To Six Lots Potential - Sidney \$975,000

Now Sold at \$875,000

The recent new Zoning Bylaw in Sidney permits subdivision of this lush and level property, within easy walking distance of downtown Sidney, into as many as six new residential single family freehold building lots.

This green corner site has 150' of frontage on Fourth St. and 110' of frontage on Ocean Boulevard and is serviced by a rear lane for its entire length. The total



site is 16,500 sq.ft.

New lots created may be 25' x 110' with parking access in the back. Please note the site will require some fill, and a drainage system, and a Development Permit is required.

Re-zoning is not required, only subdivision approval. Fourth St. is currently dead-end at Ocean Blvd. and could remain so. This is a lovely quiet site in a prime location.

This location is also easy walking distance to Tulista Park, and the ocean. Perfect for retirement or young family homes.

Please call or email for additional information:

Dave Vogel @ 250-588-8378

dave@accessrealtylvtd.com



Cecelia Ravine - Victoria \$1,750,000

The Bulk of This Site Has Now Been Sold To the City of Victoria for Expansion of the Cecelia Ravine Park

Very green potentials to this sizeable Victoria development site situated alongside Cecelia Ravine Park and the Galloping Goose Trail.

The total site is approximately 33,420 sq.ft. and has 216' frontage along the Ravine and Trail, and adjoins a children's play park at the Southern end of that frontage. The property is in three parcels and might be developed as a bare-land strata, or as two storey multi-unit residential, or as some combination of the two. The site is mostly level with access off two streets.

There are two existing dwellings of limited value. All parcels are irregular in size and shape, and total site size is estimated only. All interested parties are





advised to verify size and measurements to their own satisfaction.

Development here will provide expansive green outlooks, and the green amenities of Cecelia Ravine Park, the children's play park, and the Galloping Goose Trail, all immediately adjacent to the site.

Please call or email for additional information:

Dave Vogel @ 250-588-8378

dave@accessrealtyltd.com

*Access Realty has access to an every-changing inventory of
Single Family and Duplex Building Sites,
Properties with Additional Build-Out Potentials,
And Multi-Unit Residential Development Sites...
Please call or send an email with your general requirements
And we will respond quickly...*

Access Realty Ltd.

Victoria, B.C.

Phone: 250-588-8378 Fax: 250-385-9998

Email: info@accessrealtyltd.com

Web Design by 'Ascribe Internet Services'

Copyright Access Realty Ltd.